

#### SPECIFICATIONS:

**MODEL NUMBER:** 8090-802-270

**PUMP DESIGN:** Positive Displacement 3 Chamber Diaphragm Pump

**CHECK VALVE:** (2-Way Op.) Prevents Reverse Flow & 6 Ft. Head Forward Flow

**CAM:** 2.5 Degree

**MOTOR:** Permanent Magnet, P/N 11-160-10, Thermally Protected

**VOLTAGE:** 230 VAC Nominal

**PRESSURE SWITCH:** None

**LIQUID TEMPERATURE:** 180 Degrees Fahrenheit (82 Degrees Centigrade) Max.

**PRIME:** Self-Priming Up To 9.5 Ft. Vertical,  
Max. Inlet Pressure 30 PSI (2.1 Bar)

**PORTS:** 3/8"-18 NPT Female

**MATERIAL OF CONSTRUCTION:**

**PLASTICS-** Nylon

**VALVES-** Viton

**DIAPHRAGM-** Santoprene

**FASTENERS-** Zinc Plated Steel

**NET WEIGHT:** 4.7 Lbs (2.1 Kg)

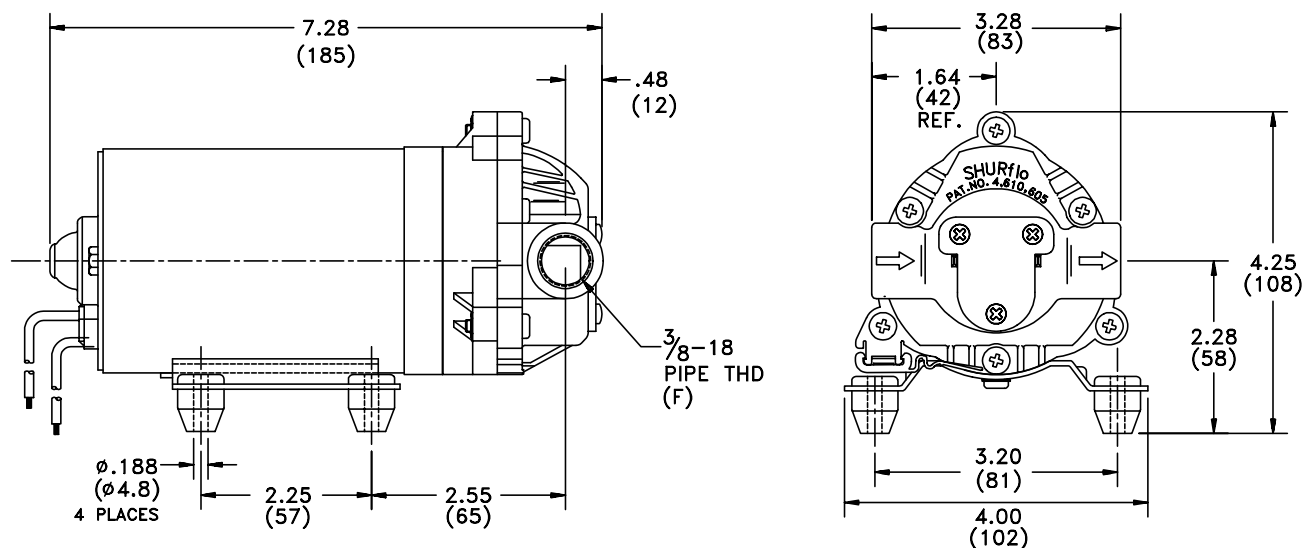
**DUTY CYCLE:** Intermittent (See Temperature Rise Chart)

**APPROVALS:** VDE Listed

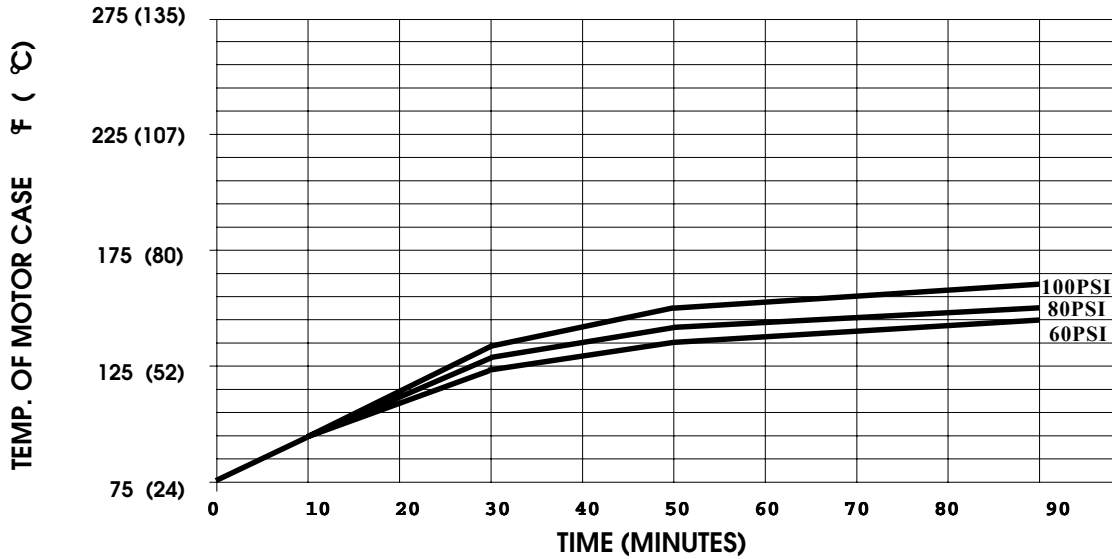
**TYPICAL APPLICATIONS:** Soil Extraction

**BYPASS:** 80 PSI

#### DIMENSIONS:



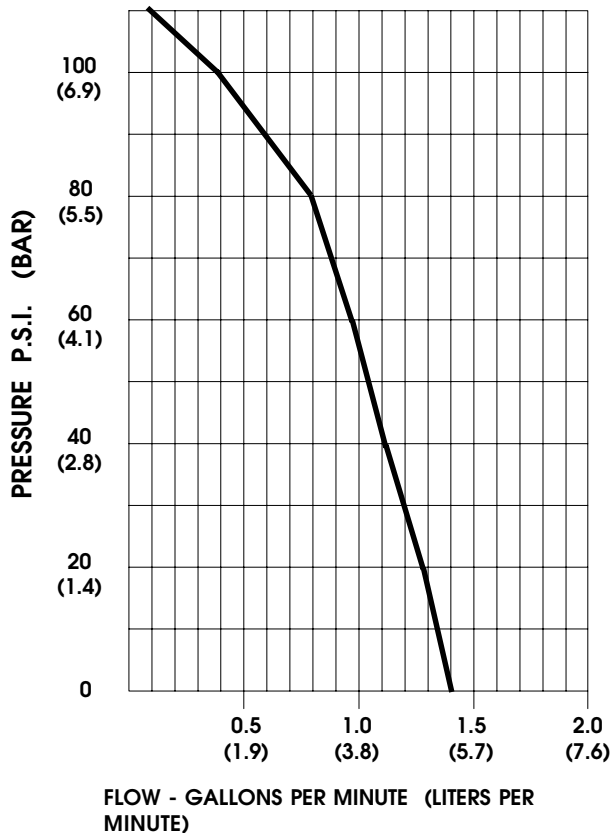
**TEMPERATURE RISE**



THIS GRAPH IS FOR USE AS A DESIGN GUIDE. IT IS BASED ON RUNNING CONTINUOUSLY WITH AN AMBIENT TEMPERATURE OF 75° F IN STILL AIR. THE THERMAL BREAKER WILL OPEN WHEN THE CASE TEMPERATURE REACHES 250° F.

[ - - - - - TRIP POINT OF THERMAL PROTECTOR ]

**TYPICAL PERFORMANCE**



PRESSURE (PSI)	FLOW (GPM/LIT)	RPM MIN/MAX	CURRENT (AMPS)	VOLTAGE (VOLTS)
OPEN	1.38/5.2	2530/2550	0.21	230 VAC
10	1.31/5.0	2435/2445	0.24	"
20	1.26/4.8	2365/2375	0.26	"
40	1.13/4.3	2245/2255	0.33	"
60	1.00/3.8	2130/2160	0.37	"
80	0.80/3.0	2045/2055	0.41	"
100	0.36/1.4	1945/1965	0.46	"

*-SPECIFICATIONS SUBJECT TO CHANGE WITHOUT NOTICE*

*-ALL DATA BASED ON TESTING WITH WATER AT AMBIENT TEMPERATURE.*