

# Specialty Pumps



## MARINE PRODUCT DATA SHEET

**OEM: 8050-261-105**  
**AFTERMARKET: 8050-261-105**

Specifically designed for refrigeration cold plate circulation, this pump allows you to adjust water flow according to your system.

### TYPICAL APPLICATIONS

Refrigeration cold plate circulation. This pump may be used for general water transfer. For other applications contact SHURflo.

### PUMP

Type: 3 Chamber Diaphragm  
Ports: 1/2" NPT-Male  
Liquid: 130 °F [54 °C] Max  
Prime: 4 feet [1.21 M]  
Inlet PSI: 30 PSI [2.1 Bar] Max  
Run Dry: Yes

### ELECTRICAL

Motor: 12VDC Permanent Magnet, Continuous Duty  
Protection: Thermal Overload, Automatic Restart  
Leads: 16 AWG, 16" [40 cm] Red +, 13" [33 cm] Black -  
Fuse: 5 Amp Recommended  
Control: 45 PSI Internal By-Pass (No External Control)

### MATERIALS

Housing: Polypropylene  
Valves: EDPM  
Diaphragm: Santoprene  
Hardware: Stainless Steel

### APPROVALS

UL Marine, CE, Ignition Protected, ISO 8846

### WARRANTY

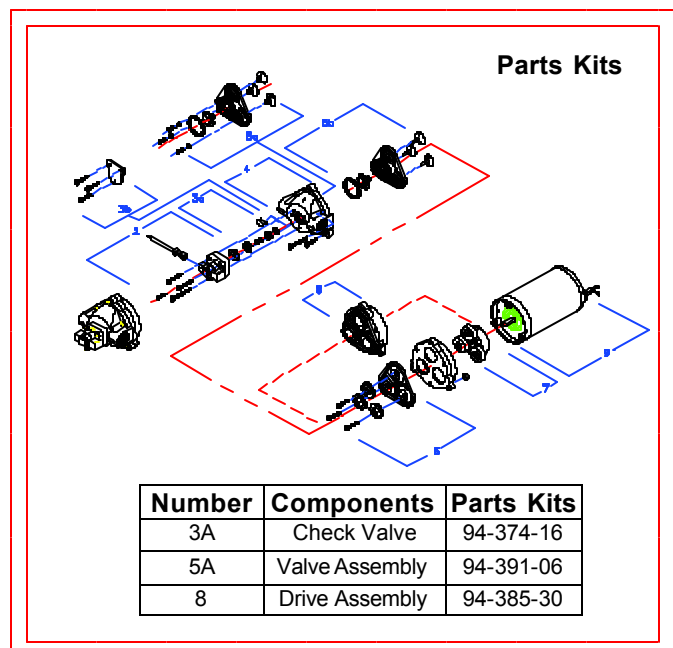
1 Year Limited Warranty  
See SB-1050 For Full Warranty Details

### SHIPPING

Net Weight (Boxed): 5.1 Lb [2.3 Kg] each  
Carton Weight: 62 Lb [28.1 Kg]  
Pumps in Carton: 12  
Carton Size: 24"L x 18"W x 11"H  
[61cm x 46 cm x 28 cm]

### RELATED DOCUMENTS

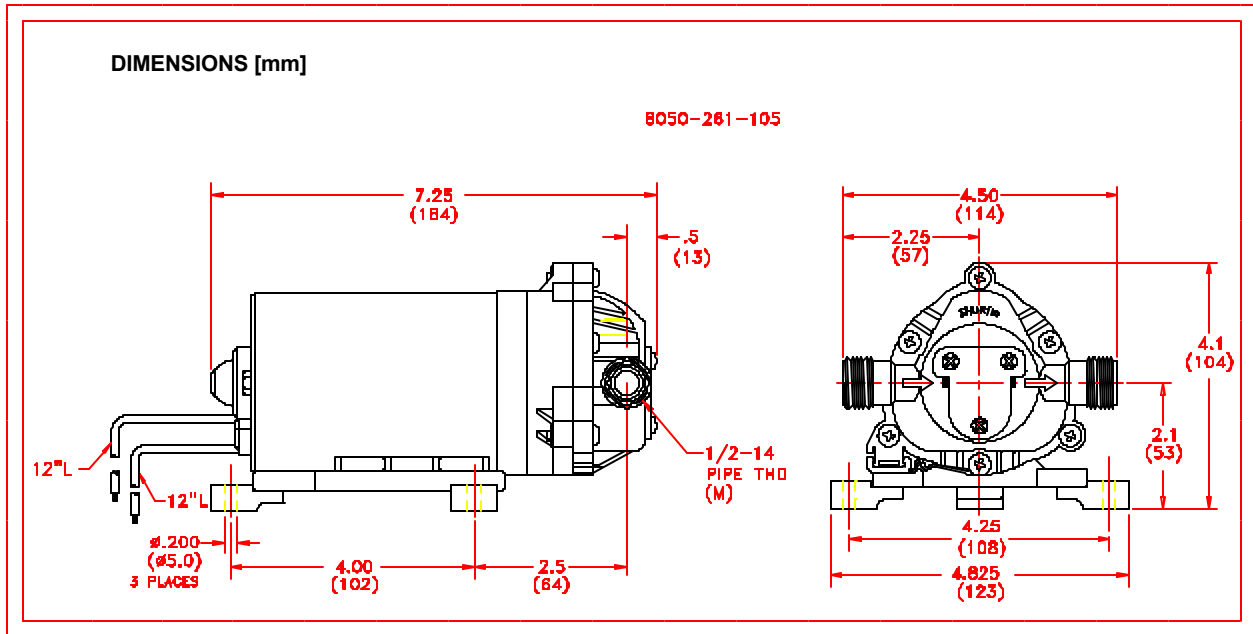
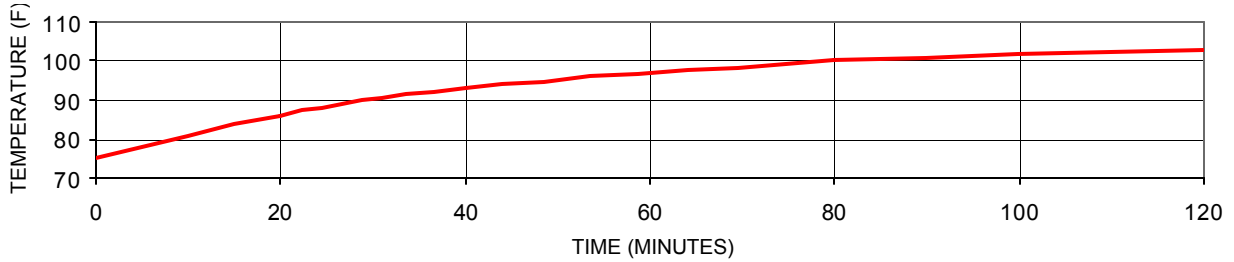
Catalog: MS-030-140  
Installation Manual: 911-314  
Maintenance: 911-314  
Applications Spec Guide: MS-020-005  
Warranty: SB-1050



**PERFORMANCE @ 12V DC**

PRESSURE		FLOW		CURRENT
BAR	PSI	GPM	LPM	AMPS
0.0	0	0.60	2.27	0.75
0.7	10	0.55	2.08	1.30
1.4	20	0.51	1.93	1.50
2.1	30	0.42	1.58	1.80

**MOTOR SHELL T-RISE @ 35 PSI, 12V**



\*ISO Registered Facility *SHURflo reserves the right to update specifications, prices, or make substitutions.*

**SHURflo \***  
 5900A Katella Ave.  
 Cypress, Ca. 90630  
 (800) 854-3218 (562) 795-5200  
 FAX (562) 795-7554  
 Shipping/UPS: 5900C Katella Ave.  
 Cypress, Ca. 90630

**SHURflo East**  
 52748 Park Six Court  
 Elkhart, IN 46514-5427  
 (800) 762-809 (574) 262-0478  
 FAX (574) 264-2169  
 Http://www.shurflo.com  
 © 2001

**SHURflo Ltd. \***  
 Unit 5 Sterling Park  
 Gatwick Road, Crawley  
 West Sussex, RH10 2QT  
 United Kingdom  
 +44 1293 424000  
 FAX +44 1293 421880

