

## SPECIFICATIONS:

**MODEL NUMBER:** 8010-102-210

**PUMP DESIGN:** Positive Displacement 3 Chamber Diaphragm Pump

**CAM:** 2.5 Degree

**MOTOR:** Permanent Magnet, P/N 11-169-00

**VOLTAGE:** 24 VAC Nominal

**PRESSURE SWITCH:** None

**LIQUID TEMPERATURE:** 180 Degrees Fahrenheit (82 Degrees Centigrade) Max.

**PORTS:** 3/8"-18 NPT Female

**MATERIAL OF CONSTRUCTION:**

**PLASTICS-** Nylon

**VALVES-** EPDM

**DIAPHRAGM-** Santoprene

**FASTENERS-** Stainless Steel

**NET WEIGHT:** 4.6 Lbs (2.08 Kg)

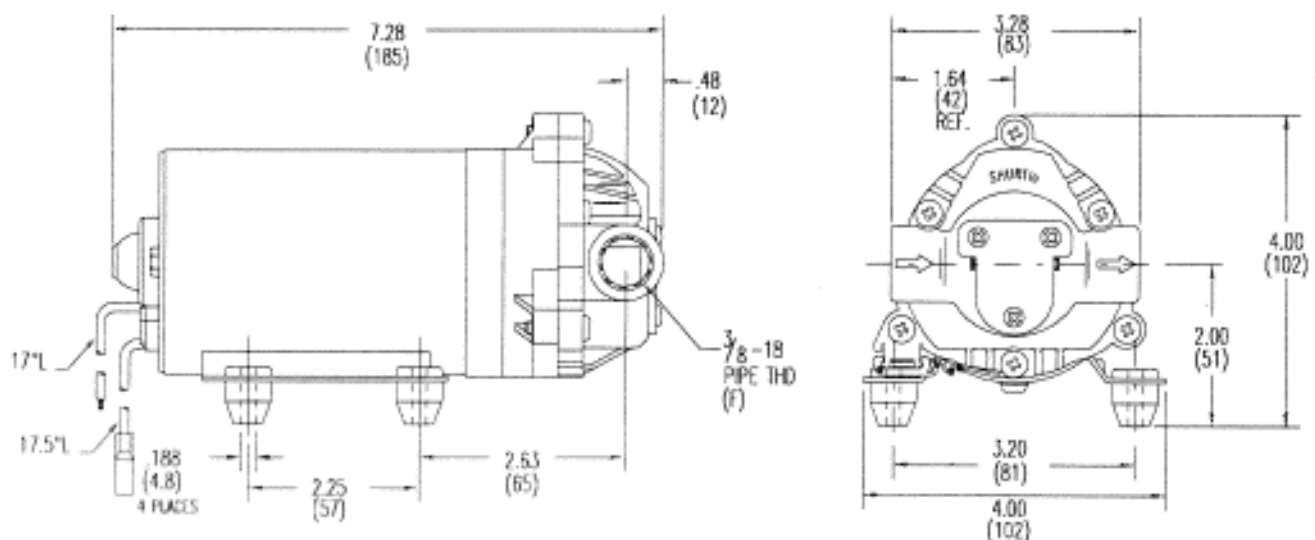
**DUTY CYCLE:** Continuous (See Temperature Rise Chart)

**APPROVALS:** NSF Listed

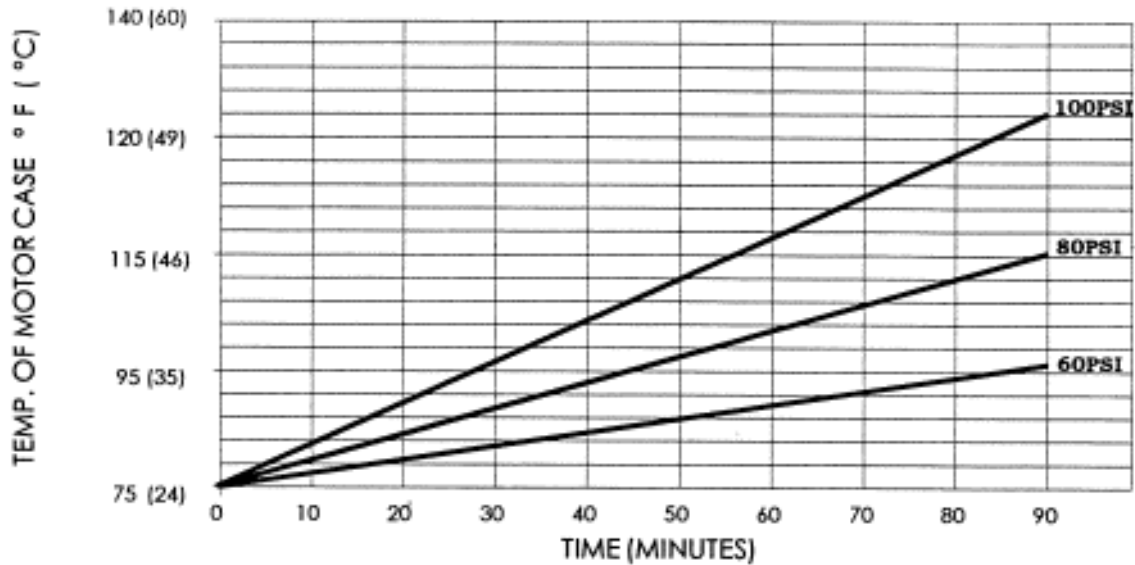
**TYPICAL APPLICATIONS:** R.O. Booster Pump

**BYPASS:** 80 PSI

## DIMENSIONS:

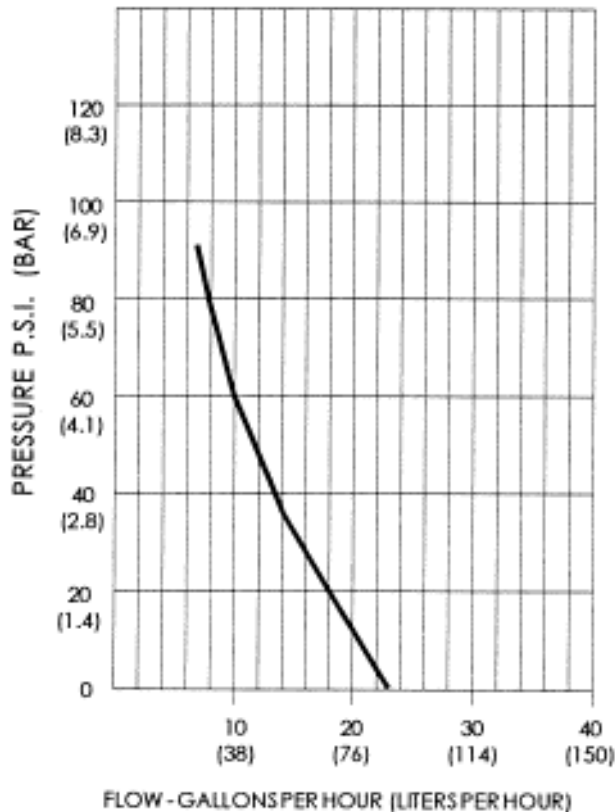


**TEMPERATURE RISE**



THIS GRAPH IS FOR USE AS A DESIGN GUIDE. IT IS BASED ON RUNNING CONTINUOUSLY WITH AN AMBIENT TEMPERATURE OF 70 ° F IN STILL AIR.

**TYPICAL PERFORMANCE**



PRESSURE (PSI)	FLOW (GPH/LIT)	RPM MIN/MAX	CURRENT (AMPS)	VOLTAGE (VOLTS)
OPEN	22.4/84.8	680/710	0.43	24 VAC
10	20.1/14.3	630/645	0.48	"
20	18.1/68.5	610/625	0.57	"
30	15.8/59.8	575/590	0.66	"
40	13.8/52.2	540/550	0.74	"
50	11.7/44.3	515/525	0.82	"
60	9.9/37.5	480/490	0.90	"
70	9.6/36.3	445/455	0.95	"
80	7.9/29.9	420/425	1.00	"
90	7.0/26.5	415/420	1.11	"

*-SPECIFICATIONS SUBJECT TO CHANGE WITHOUT NOTICE.*

*-ALL DATA BASED ON TESTING WITH WATER AT AMBIENT TEMPERATURE.*