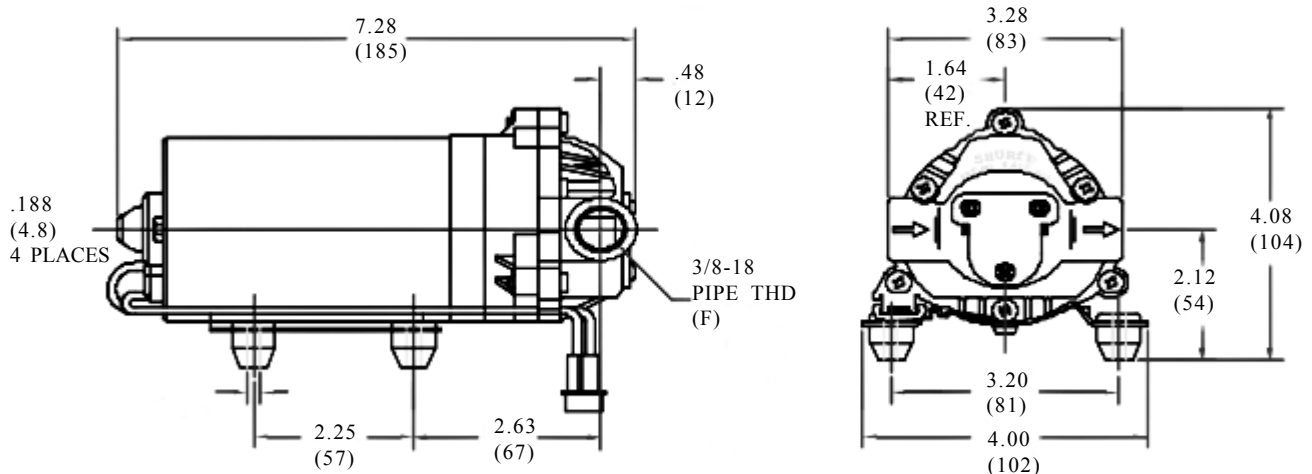


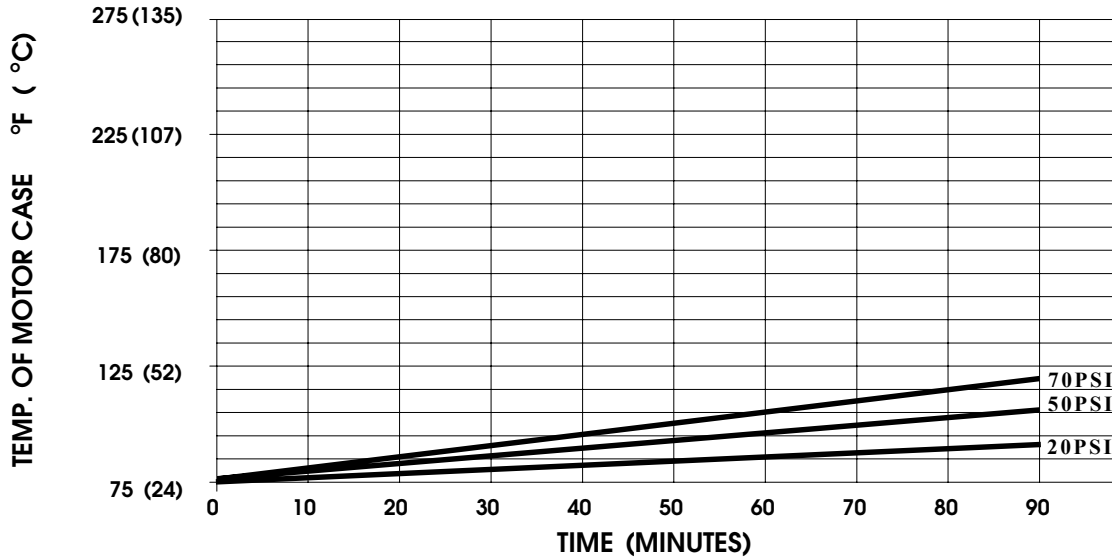
### SPECIFICATIONS:

**MODEL NUMBER:** 8010-101-201  
**PUMP DESIGN:** Positive Displacement 3 Chamber Diaphragm Pump  
**CAM:** 2.0 Degree  
**MOTOR:** Permanent Magnet, P/N 11-155-00  
**VOLTAGE:** 24 VAC Nominal  
**PRESSURE SWITCH:** None  
**LIQUID TEMPERATURE:** 180 Degrees Fahrenheit (82 Degrees Centigrade) Max.  
**PRIME:** Self-Priming Up To 4.0 Ft. Vertical,  
Max. Inlet Pressure 30 PSI (2.1 Bar)  
**PORTS:** 3/8"-18 NPT Female  
**MATERIAL OF CONSTRUCTION:**  
**PLASTICS-** Nylon  
**VALVES-** EPDM  
**DIAPHRAGM-** Santoprene  
**FASTENERS-** Stainless Steel  
**NET WEIGHT:** 4.7 Lbs (2.13 Kg)  
**DUTY CYCLE:** Continuous (See Temperature Rise Chart)  
**APPROVALS:** N.S.F. Listed  
**TYPICAL APPLICATIONS:** R.O. Booster Pump  
**BYPASS:** 60 PSI Springs

### DIMENSIONS:

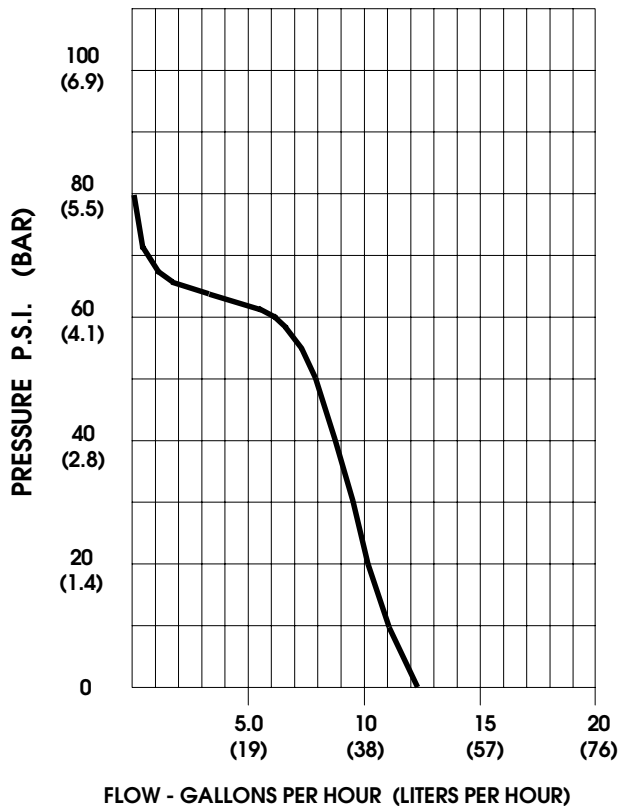


**TEMPERATURE RISE**



THIS GRAPH IS FOR USE AS A DESIGN GUIDE. IT IS BASED ON RUNNING CONTINUOUSLY WITH AN AMBIENT TEMPERATURE OF 70° F IN STILL AIR.

**TYPICAL PERFORMANCE**



PRESSURE (PSI)	FLOW (GPH/LIT)	RPM MIN/MAX	CURRENT (AMPS)	VOLTAGE (VOLTS)
OPEN	12.3/46	470/475	0.15	24 VAC
10	11.0/42	450/455	0.18	"
20	10.1/38	430/435	0.23	"
30	9.4/36	415/420	0.25	"
40	8.7/33	395/400	0.30	"
50	8.0/30	380/385	0.34	"
60	6.2/23	370/380	0.37	"
70	0.8/3.0	350/375	0.39	"
80	0.2/0.7	345/375	0.49	"

*-SPECIFICATIONS SUBJECT TO CHANGE WITHOUT NOTICE.  
-ALL DATA BASED ON TESTING WITH WATER.*