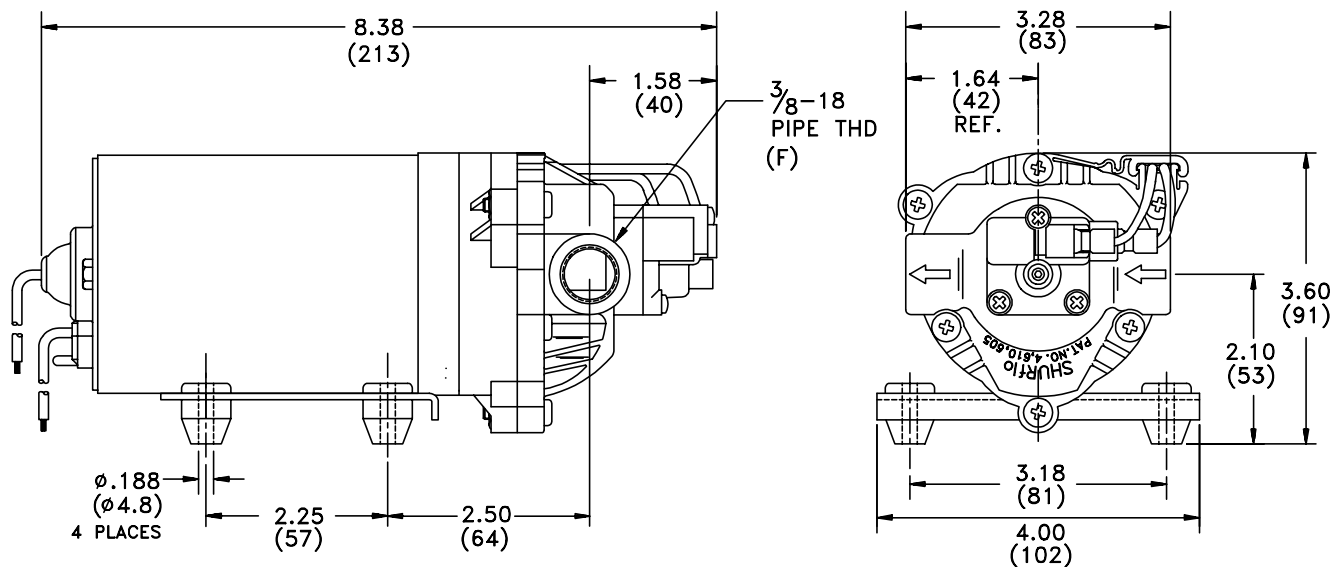


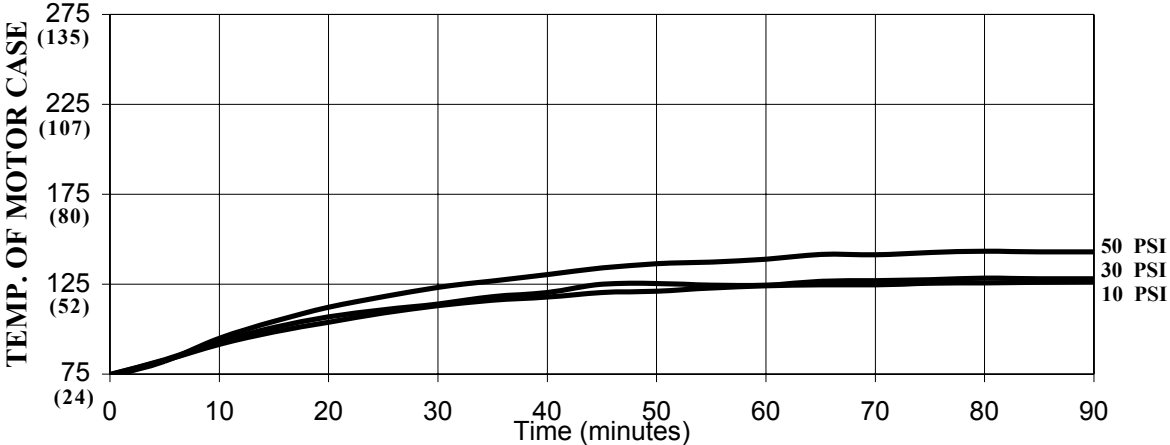
SPECIFICATIONS:

- MODEL NUMBER:** 8006-543-236
- PUMP DESIGN:** Positive Displacement 3 Chamber Diaphragm Pump
- CHECK VALVE:** (1-Way operation prevents reverse flow)
- CAM:** 3.0
- MOTOR:** 11-111-07 Permanent Magnet
- VOLTAGE:** 12 VDC Nominal
- PRESSURE SWITCH:** Adjustable Shut-off (Range 40-60 PSI)
 Factory set @ 60 PSI, Turn on 45 ± 5 PSI
- LIQUID TEMPERATURE:** 170 Degrees Fahrenheit (82 Degrees Centigrade)
- PRIME:** Self Priming up to 10 Ft. Vertical
- PORTS:** 3/8" -18 NPT Female
- MATERIAL OF CONSTRUCTION:**
 - PLASTICS-** Polypropylene
 - VALVES-** Viton
 - DIAPHRAGM-** Santoprene (Solid)
 - FASTENERS-** Stainless Steel
- NET WEIGHT:** 4.6 Lbs (2.08Kg)
- DUTY CYCLE:** Intermittent (See Temperature Rise Chart)
- TYPICAL APPLICATIONS:** Agricultural Spraying

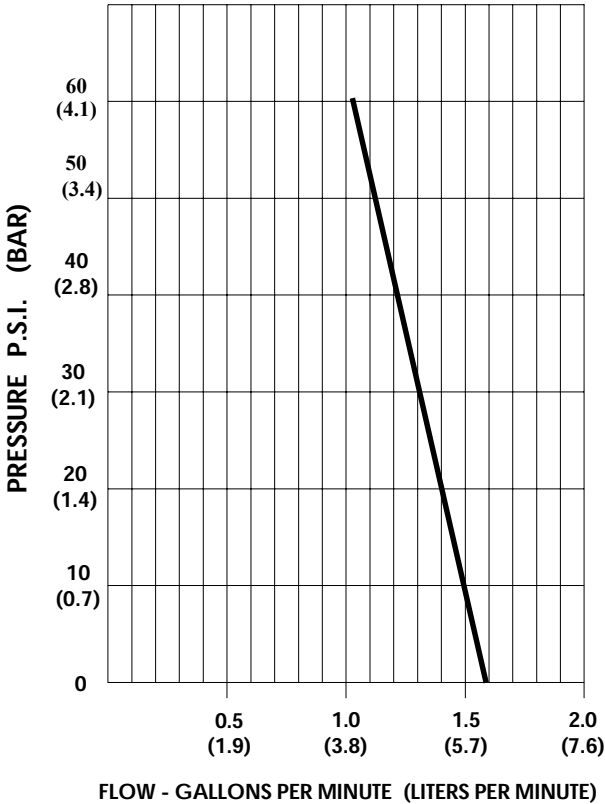
DIMENSIONS:



TEMPERATURE RISE



TYPICAL PERFORMANCE



PRESSURE (PSI)	FLOW (GPM/LIT)	CURRENT (AMPS)	VOLTAGE (VOLTS)
OPEN	1.55/5.9	3.0	12VDC
10	1.52/5.8	3.5	
20	1.45/5.5	4.2	
30	1.39/5.3	4.8	
40	1.33/5.0	5.4	
60	1.20/4.5	6.5	

*-SPECIFICATIONS SUBJECT TO CHANGE WITHOUT NOTICE.
 -ALL DATA BASED ON TESTING WITH WATER AT AMBIENT TEMPERATURE.*