

SPECIFICATIONS:

MODEL NUMBER: 8005-952-490

PUMP DESIGN: Positive Displacement 3 Chamber Diaphragm Pump

CAM: 2.5 Degree

MOTOR: Permanent Magnet, P/N 11-147-10

VOLTAGE: 24VDC Nominal

PRESSURE SWITCH: None

LIQUID TEMPERATURE: 180 Degrees Fahrenheit (82 Degrees Centigrade) Max.

PORTS: 3/8"-18 NPT Female

MATERIAL OF CONSTRUCTION:

PLASTICS- Nylon

VALVES- EPDM

DIAPHRAGM- Santoprene

FASTENERS- Stainless Steel

NET WEIGHT: 4.75 Lbs (2.15 Kg)

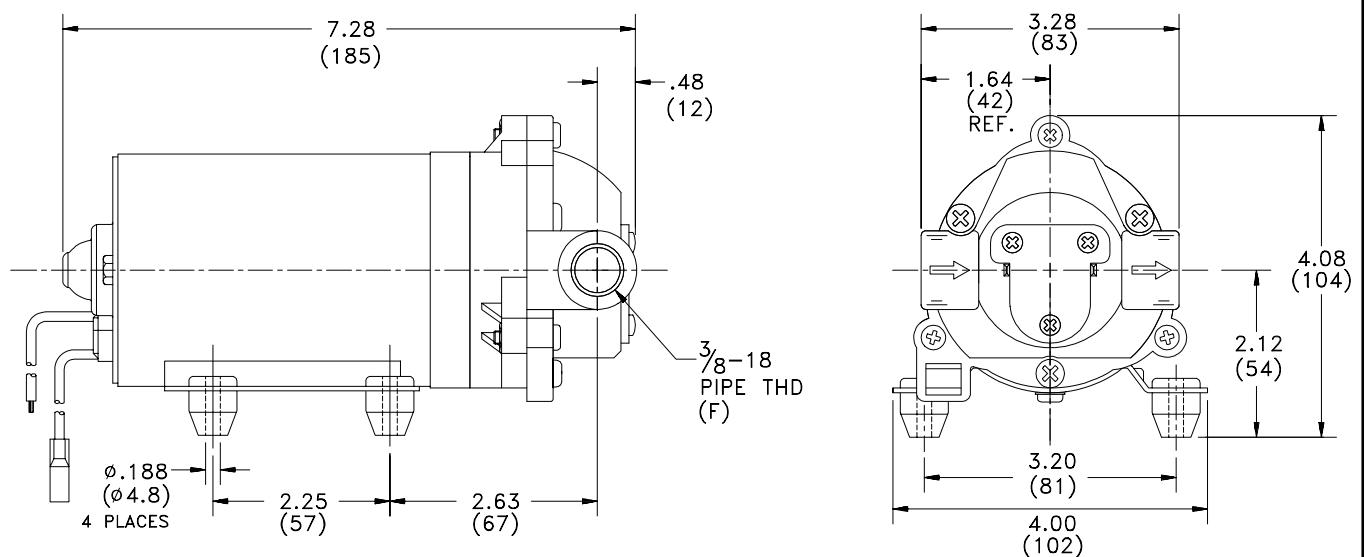
DUTY CYCLE: Continuous (See Temperature Rise Chart)

APPROVALS: NSF Listed

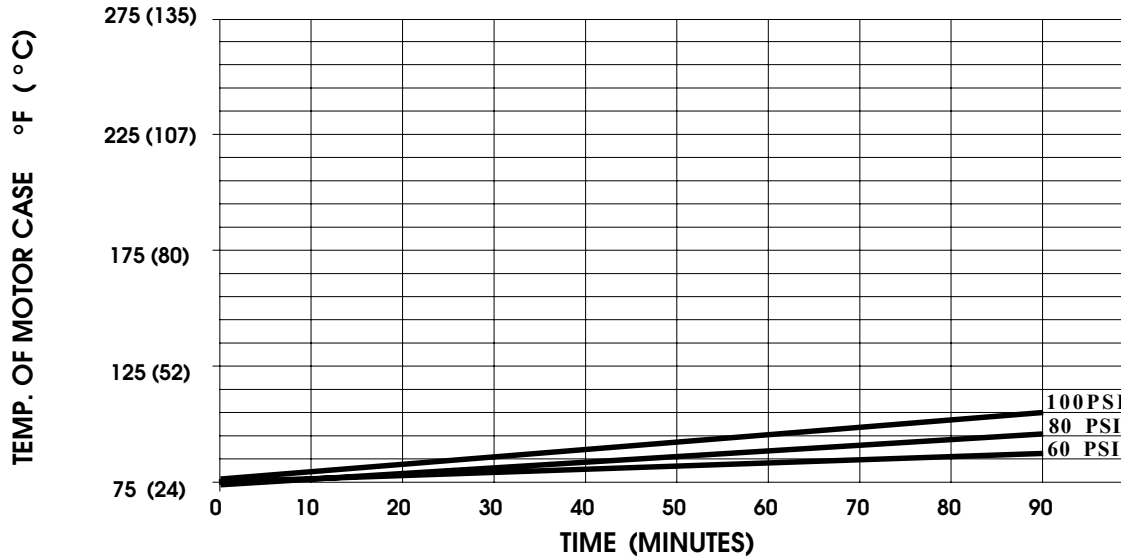
TYPICAL APPLICATIONS: R.O. Booster Pump

BYPASS: 100 PSI

DIMENSIONS:

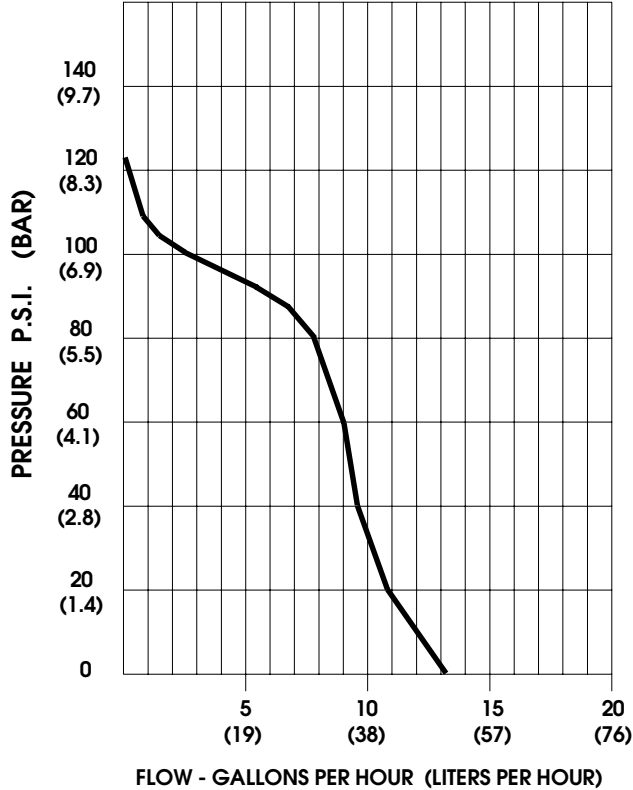


TEMPERATURE RISE



THIS GRAPH IS FOR USE AS A DESIGN GUIDE. IT IS BASED ON RUNNING CONTINUOUSLY WITH AN AMBIENT TEMPERATURE OF 73° F IN STILL AIR.

TYPICAL PERFORMANCE



PRESSURE (PSI)	FLOW (GPH/LIT)	RPM MIN/MAX	CURRENT (AMPS)	VOLTAGE (VOLTS)
OPEN	13.2/50	415/425	0.14	24 VDC
10	11.4/43	405/410	0.18	"
20	10.8/41	385/395	0.23	"
30	10.2/38	365/380	0.28	"
40	9.6/36	345/365	0.34	"
50	9.3/35	325/345	0.39	"
60	9.0/34	305/335	0.44	"
70	8.4/32	285/325	0.48	"
80	7.8/29	265/310	0.53	"
90	7.2/27	250/300	0.58	"
100	2.4/9	225/290	0.64	"

*-SPECIFICATIONS SUBJECT TO CHANGE WITHOUT NOTICE.
-ALL DATA BASED ON TESTING WITH WATER.*