

SPECIFICATIONS:

MODEL NUMBER: 8005-942-220

PUMP DESIGN: Positive Displacement 3 Chamber Diaphragm Pump

CAM: 2.5 Degree

MOTOR: Permanent Magnet, P/N 11-111-00

VOLTAGE: 12VDC Nominal

PRESSURE SWITCH: None

LIQUID TEMPERATURE: 180 Degrees Fahrenheit (82 Degrees Centigrade) Max.

PRIME: Self-Priming Up To 5 Ft. Vertical,
Max. Inlet Pressure 30 PSI (2.1 Bar)

PORTS: 3/8"-18 NPT Female

MATERIAL OF CONSTRUCTION:

PLASTICS- Nylon

VALVES- EPDM

DIAPHRAGM- Santoprene

FASTENERS- Zinc Plated Steel

NET WEIGHT: 4.0 Lbs (1.8 Kg)

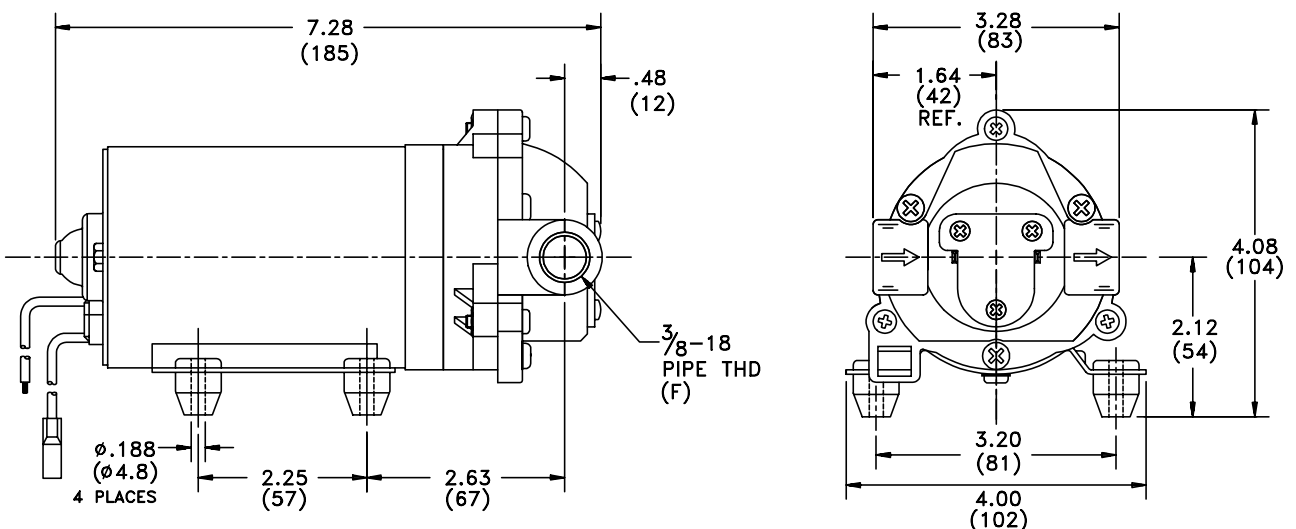
DUTY CYCLE: Continuous (See Temperature Rise Chart)

TYPICAL APPLICATIONS: Delivery Pump

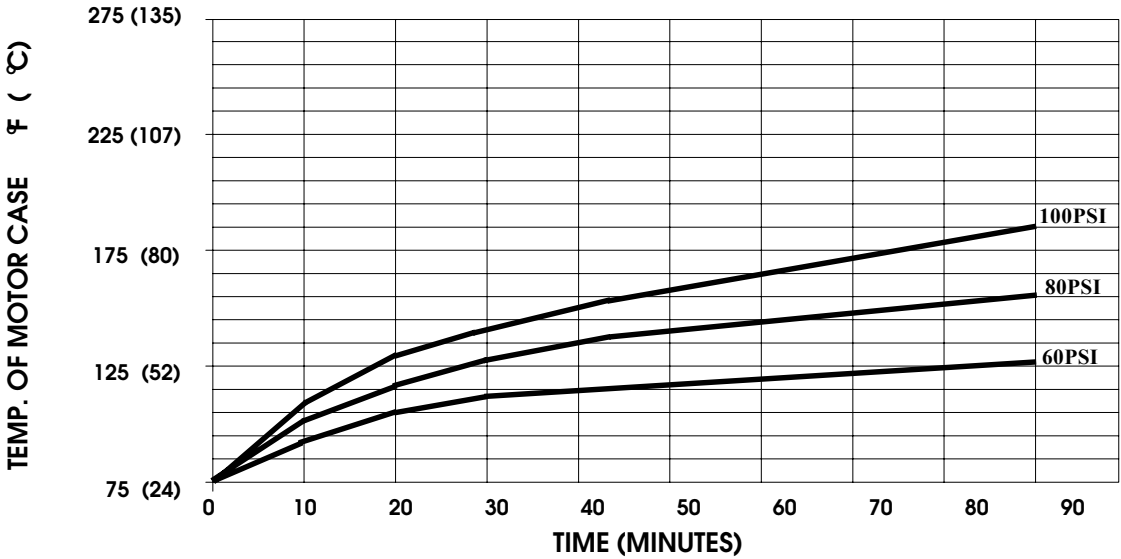
BYPASS: 80 PSI

APPROVALS: NSF Listed

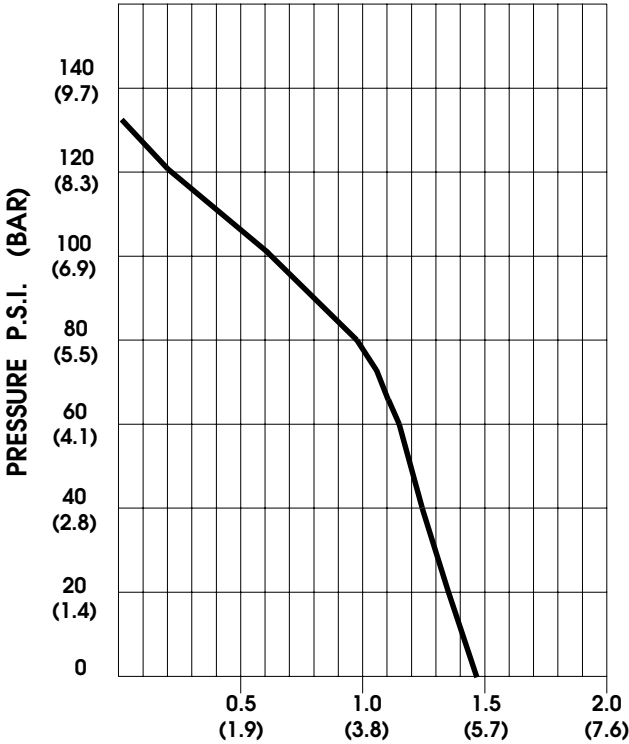
DIMENSIONS:



TEMPERATURE RISE



TYPICAL PERFORMANCE



PRESSURE (PSI)	FLOW (GPM/LIT)	RPM MIN/MAX	CURRENT (AMPS)	VOLTAGE (VOLTS)
OPEN	1.46/5.5	2385/2405	2.6	12VDC
10	1.40/5.3	2350/2375	3.0	"
20	1.35/5.1	2315/2335	3.6	"
30	1.29/4.9	2265/2290	4.3	"
40	1.24/4.7	2230/2255	4.9	"
50	1.19/4.5	2190/2210	5.5	"
60	1.15/4.3	2155/2170	6.0	"
70	1.07/4.0	2120/2135	6.6	"
80	0.97/3.7	2090/2100	7.2	"
90	0.81/3.1	2050/2060	7.7	"
100	0.62/2.3	2015/2030	8.2	"
120	0.21/0.8	1960/1965	9.2	"

*-SPECIFICATIONS SUBJECT TO CHANGE WITHOUT NOTICE.
 -ALL DATA BASED ON TESTING WITH WATER AT AMBIENT TEMPERATURE.*