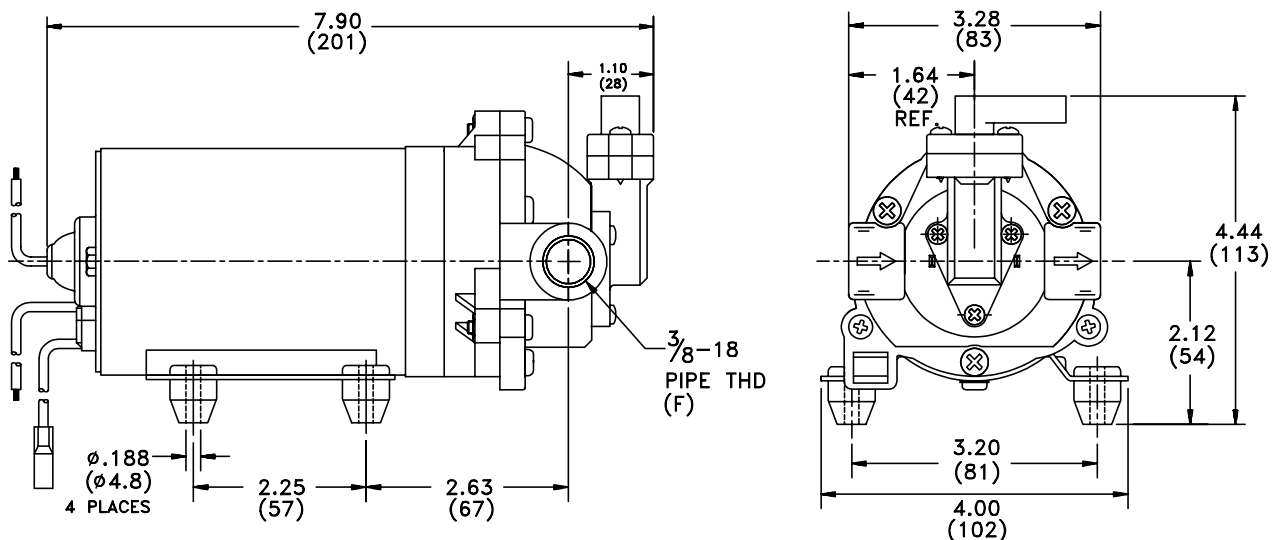


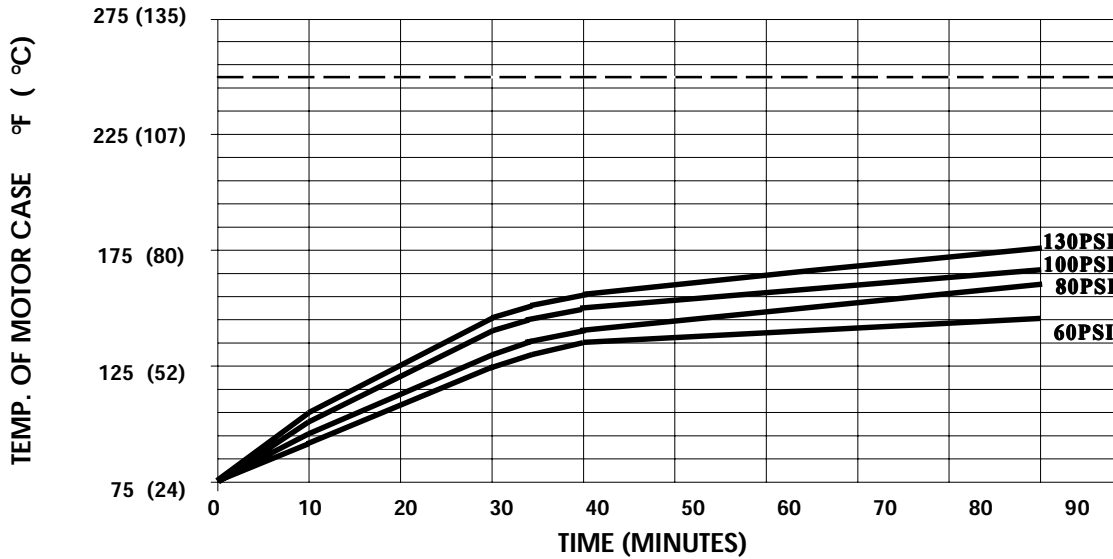
SPECIFICATIONS:

- MODEL NUMBER:** 8000-802-639
- PUMP DESIGN:** Positive Displacement 3 Chamber Diaphragm Pump
- CAM:** 2.5 Degree
- MOTOR:** Permanent Magnet, P/N 11-160-10, Thermally Protected
- VOLTAGE:** 230 VAC Nominal
- PRESSURE SWITCH:** Adjustable Bypass
- LIQUID TEMPERATURE:** 180 Degrees Fahrenheit (82 Degrees Centigrade) Max.
- PRIME:** Self-Priming Up To 12 Ft. Vertical,
 Max. Inlet Pressure 30 PSI (2.1 Bar)
- PORTS:** 3/8"-18 NPT Female
- MATERIAL OF CONSTRUCTION:**
 - PLASTICS-** Nylon
 - VALVES-** Viton
 - DIAPHRAGM-** Santoprene
 - FASTENERS-** Zinc Plated Steel
- NET WEIGHT:** 4.7 Lbs (2.14 Kg)
- DUTY CYCLE:** Intermittent (See Temperature Rise Chart)
- TYPICAL APPLICATIONS:** Soil Extraction
- BYPASS:** 140 PSI Max.

DIMENSIONS:



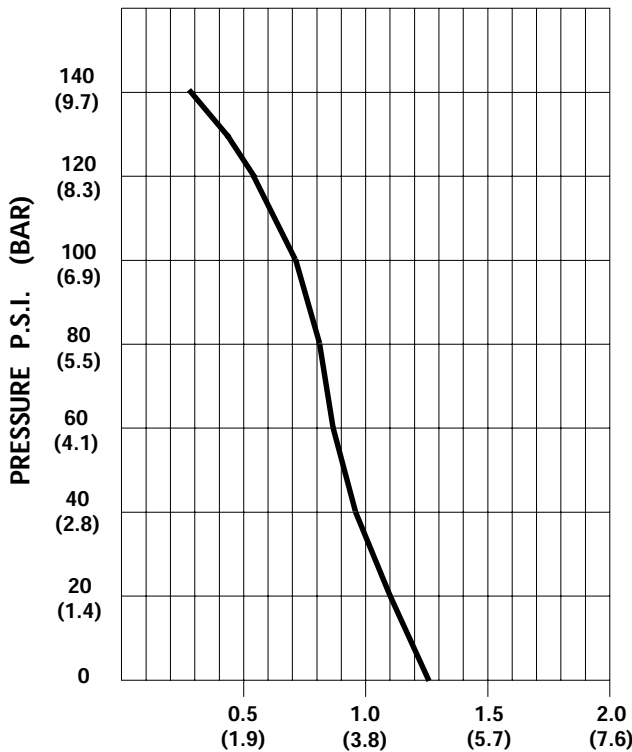
TEMPERATURE RISE



THIS GRAPH IS FOR USE AS A DESIGN GUIDE. IT IS BASED ON RUNNING CONTINUOUSLY WITH AN AMBIENT TEMPERATURE OF 75 °F IN STILL AIR. THE THERMAL BREAKER WILL OPEN WHEN THE CASE TEMPERATURE REACHES 120° C.

[----- TRIP POINT OF THERMAL PROTECTOR]

TYPICAL PERFORMANCE



PRESSURE (PSI)	FLOW (GPM/LIT)	RPM MIN/MAX	CURRENT (AMPS)	VOLTAGE (VOLTS)
OPEN	1.27/4.8	2520/2580	0.20	230VAC
10	1.22/4.6	2440/2510	0.23	"
20	1.11/4.2	2375/2435	0.24	"
30	1.00/3.8	2335/2365	0.26	"
40	0.95/3.6	2280/2300	0.29	"
50	0.92/3.5	2215/2250	0.31	"
60	0.88/3.3	2165/2195	0.32	"
70	0.84/3.2	2120/2140	0.34	"
80	0.81/3.1	2075/2100	0.36	"
100	0.72/2.7	1995/2005	0.40	"
120	0.54/2.0	1920/1930	0.43	"
140	0.29/1.1	1845/1850	0.46	"

FLOW - GALLONS PER MINUTE (LITERS PER MINUTE)

-SPECIFICATIONS SUBJECT TO CHANGE WITHOUT NOTICE.

-ALL DATA BASED ON TESTING WITH WATER.