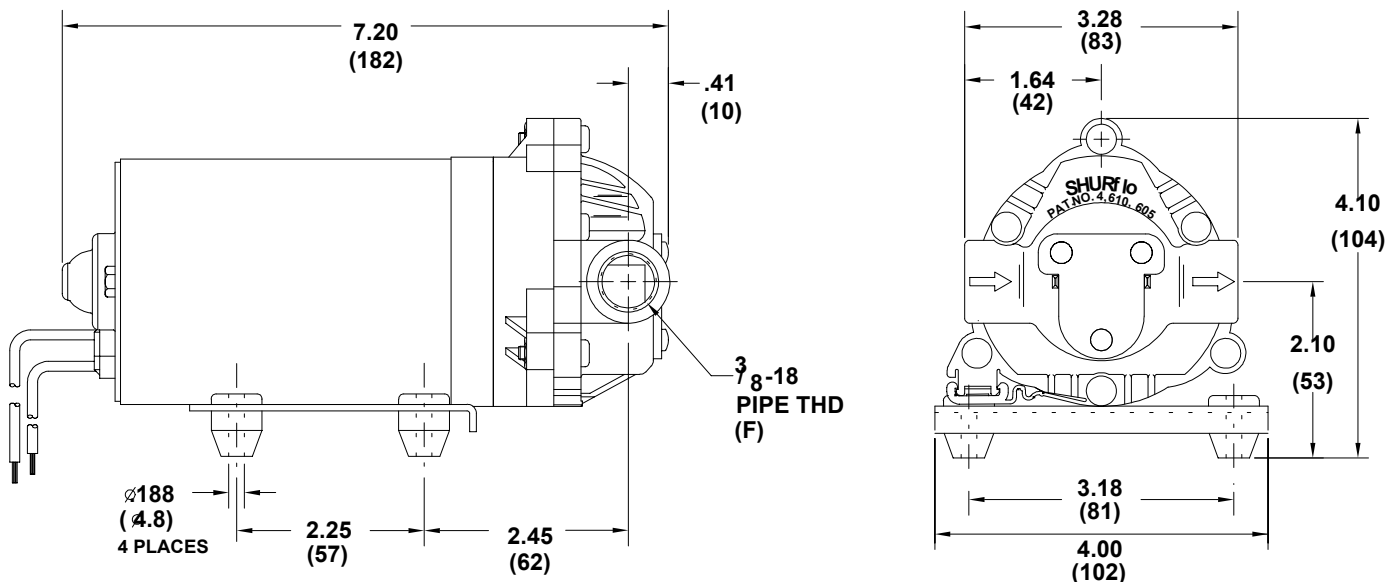


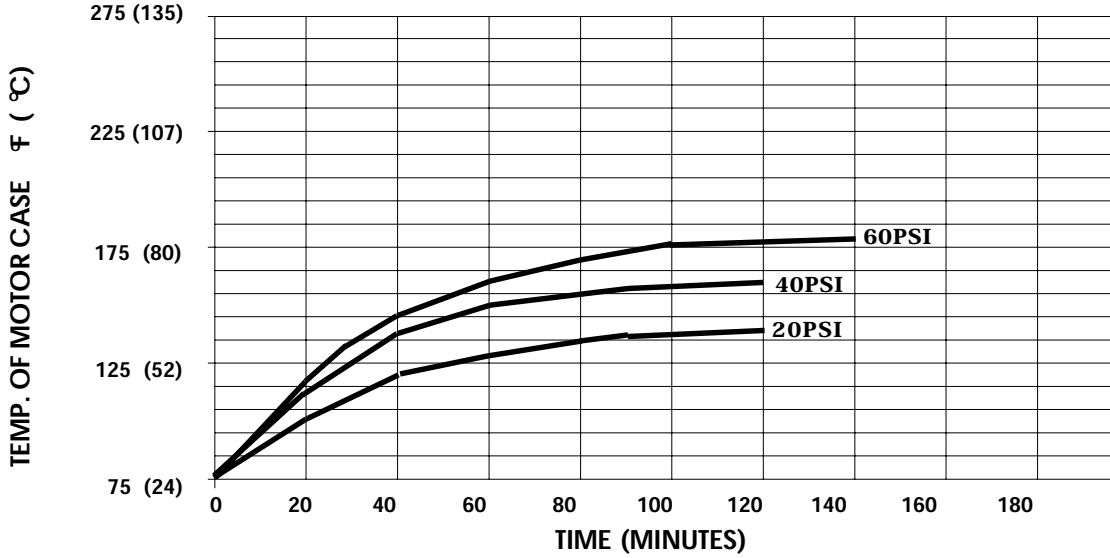
SPECIFICATIONS:

MODEL NUMBER: 8000-543-220
PUMP DESIGN: Positive Displacement 3 Chamber Diaphragm Pump
CAM: 3.0 Degree
MOTOR: Permanent Magnet, P/N 11-111-00
VOLTAGE: 12 VDC Nominal
PRESSURE SWITCH: None
LIQUID TEMPERATURE: 170 Degrees Fahrenheit (77 Degrees Centigrade) Max.
PRIME: Self-Priming Up To 11 Ft. Vertical,
 Max. Inlet Pressure 30 PSI (2.1 Bar)
PORTS: 3/8"-18 NPT Female
MATERIAL OF CONSTRUCTION:
 PLASTICS- Polypropylene
 VALVES- Viton
 DIAPHRAGM- Santoprene
 FASTENERS- Zinc Plated Steel
NET WEIGHT: 4.5 Lbs (2.0 Kg)
DUTY CYCLE: Continuous (See Temperature Rise Chart)
TYPICAL APPLICATIONS: Soil Extraction, Water Delivery
BYPASS: 60 PSI

DIMENSIONS:

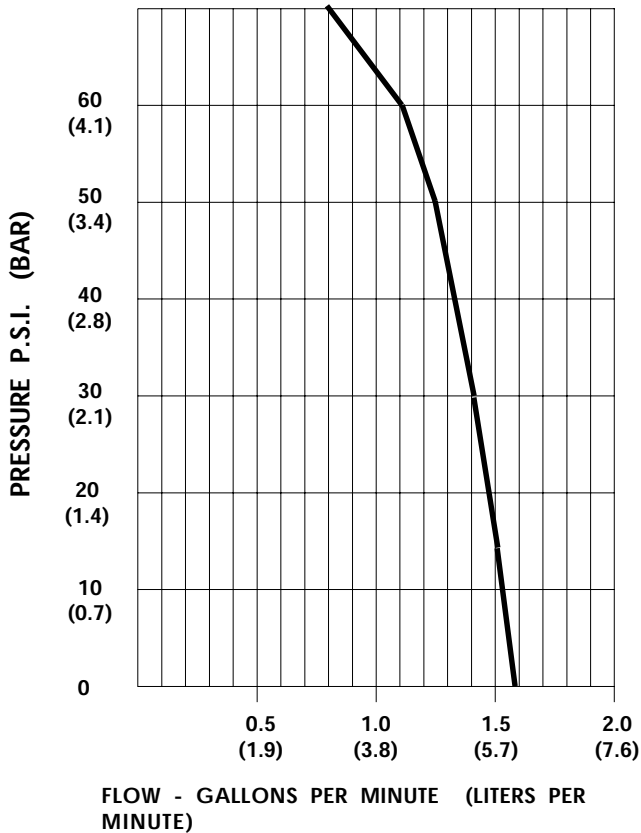


TEMPERATURE RISE



THIS GRAPH IS FOR USE AS A DESIGN GUIDE. IT IS BASED ON RUNNING CONTINUOUSLY WITH AN AMBIENT TEMPERATURE OF 75° F IN STILL AIR.

TYPICAL PERFORMANCE



PRESSURE (PSI)	FLOW (GPM/LIT)	RPM MIN/MAX	CURRENT (AMPS)	VOLTAGE (VOLTS)
OPEN	1.56/5.9	2210/2295	3.2	12VDC
10	1.52/5.7	2155/2255	3.8	"
20	1.45/5.5	2080/2185	4.5	"
30	1.39/5.3	2025/2120	5.2	"
40	1.33/5.0	1965/2065	5.8	"
50	1.25/4.7	1920/1965	6.5	"
60	1.12/4.2	1860/1935	7.1	"
70	0.80/3.0	1805/1890	7.7	"

-SPECIFICATIONS SUBJECT TO CHANGE WITHOUT NOTICE.

-ALL DATA BASED ON TESTING WITH WATER AT AMBIENT TEMPERATURE.