

# Specialty Pumps



## MARINE PRODUCT DATA SHEET

**OEM: 2095-273-200**  
**AFTERMARKET: 2095-273-200**

Specifically designed for refrigeration cold plate circulation, this pump allows you to adjust water flow according to your system.

### TYPICAL APPLICATIONS

Refrigeration cold plate circulation. This pump may be used for general water transfer. For other applications contact SHURflo.

### PUMP

Type: 3 Chamber Diaphragm  
 Ports: 1/2"-14 NPSM-Male  
 Liquid: 130 °F [54 °C] Max  
 Prime: 6 feet [1.82 M]  
 Inlet PSI: 30 PSI [2.1 Bar] Max  
 Run Dry: Yes

### ELECTRICAL

Motor: 12VDC Permanent Magnet, Continuous Duty  
 Protection: Thermal Overload, Automatic Restart  
 Leads: 16 AWG, 16" [40 cm] Red +, 13" [33 cm] Black -  
 Fuse: 5 Amp Recommended  
 Control: No Control

### MATERIALS

Housing: Polypropylene  
 Valves: EDPM  
 Diaphragm: Santoprene  
 Hardware: Stainless Steel

### APPROVALS

Ignition Protected, CE, ISO 8846

### WARRANTY

1 Year Limited Warranty  
 See SB-1050 For Full Warranty Details

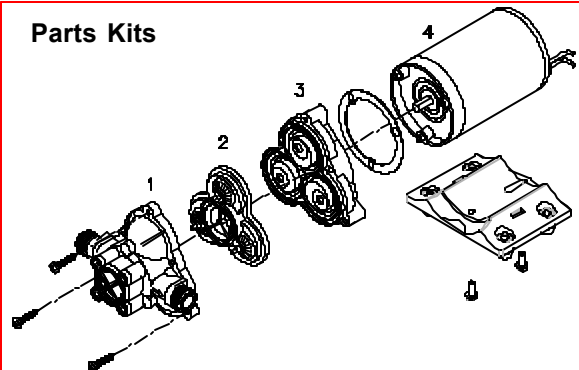
### SHIPPING

Net Weight (Boxed): 5.6 Lb [2.5 Kg] each  
 Carton Weight: 6 each, 34 Lb [15 Kg]  
 Carton Size: 24"L x 18"W x 6"H [61 cm x 46cm x 15 cm]

### RELATED DOCUMENTS

Catalog: MS-030-140  
 Installation Manual: 911-396  
 Maintenance: 911-396  
 Applications Spec Guide: MS-020-005  
 Warranty: SB-1050

### Parts Kits



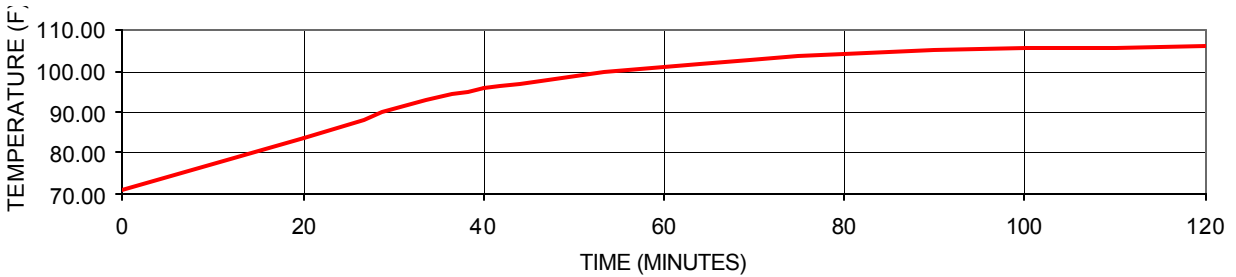
Number	Components	Parts Kits
1	Housing/Cover	--
2	Valve Assembly	94-232-06
3	Drive Assembly	94-238-04
4	Motor	11-187-12
5	Pump Head	--
Not Shown	Check Valve	94-237-00



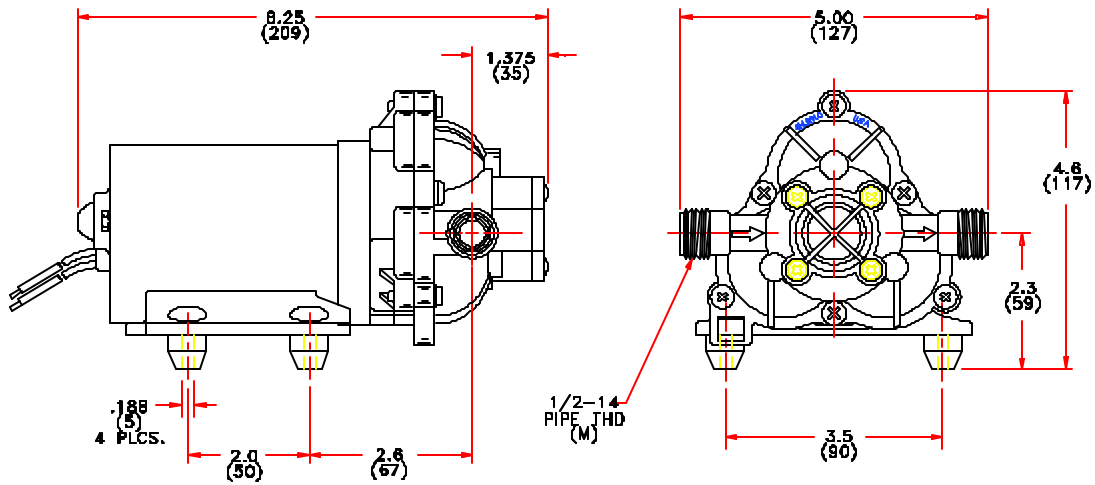
PERFORMANCE @ 12V DC

PRESSURE		FLOW		CURRENT
BAR	PSI	GPM	LPM	AMPS
0.0	0	1.75	6.6	1.28
1.4	20	1.15	4.4	2.65
2.8	40	0.65	2.5	2.95
4.1	60	0.25	0.9	2.80
5.5	80	0.00	0.0	3.45

MOTOR SHELL T-RISE @ 40 PSI, 12V



DIMENSIONS [mm]



\*ISO Registered Facility SHURflo reserves the right to update specifications, prices, or make substitutions.

SHURflo \*  
 5900A Katella Ave.  
 Cypress, Ca. 90630  
 (800) 854-3218 (562) 795-5200  
 FAX (562) 795-7554  
 Shipping/UPS: 5900C Katella Ave.  
 Cypress, Ca. 90630

SHURflo East  
 52748 Park Six Court  
 Elkhart, IN 46514-5427  
 (800) 762-809 (574) 262-0478  
 FAX (574) 264-2169  
 Http://www.shurflo.com  
 © 2001

SHURflo Ltd. \*  
 Unit 5 Sterling Park  
 Gatwick Road, Crawley  
 West Sussex, RH10 2QT  
 United Kingdom  
 +44 1293 424000  
 FAX +44 1293 421880

