

TYPICAL APPLICATIONS

Multi-fixture marine potable water installations. Other uses may include 12 VDC pressurized water systems in cabins. This pump may be used for general water transfer. For other applications, contact SHURflo.

PUMP

| | |
|-----------|----------------------|
| Type | 3 Chamber Diaphragm |
| Ports | 1/2"-14 NPSM-Male |
| Liquid | 130 °F [54 °C] Max |
| Prime | 9 feet [2.7 M] |
| Inlet PSI | 30 PSI [2.1 Bar] Max |
| Run Dry | Yes |

ELECTRICAL

| | |
|------------|--|
| Motor | 12VDC Permanent Magnet, Intermittent Duty |
| Protection | Thermal Overload, Automatic Restart |
| Leads | 16 AWG, 16" [40 cm] Red +, 13" [33 cm] Black - |
| Fuse | 10 Amp Time Delay Recommended |
| Control | Adjustable Switch with Check Valve |
| | Shut-Off 30 PSI [2.1 Bar] ± 5 PSI [0.4 Bar] |
| | Restart 18 PSI [1.2 Bar] ± 5 PSI [0.4 Bar] |

MATERIALS

| | |
|-----------|-----------------|
| Housing | Polypropylene |
| Valves | EPDM |
| Diaphragm | Santoprene |
| Hardware | Stainless Steel |

APPROVALS

c-UL Marine, Ignition Protected, ISO 8846

WARRANTY

5 Year Limited Warranty
See SB-1050 For Full Warranty Details

SHIPPING

| | |
|--------------------|--|
| Net Weight (Boxed) | 5 Lb [2.3Kg] each |
| Carton Weight | 12 each, 52 Lb [24 Kg] |
| Carton Size | 24"L x 18"W x 11"H [61cm x 46cm x 28cm] |

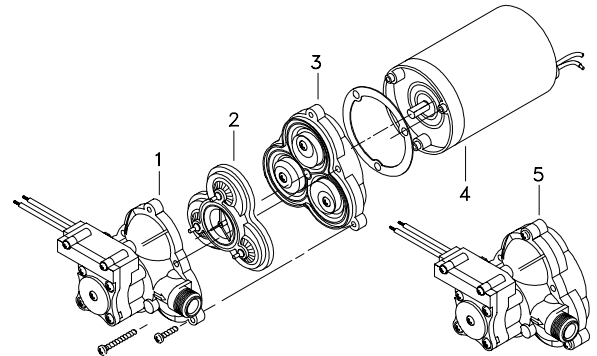
RELATED DOCUMENTS

| | |
|-------------------------|------------|
| Catalog | MS-030-084 |
| Installation Manual | 911-454 |
| Maintenance | 911-454 |
| Applications Spec Guide | MS-020-005 |
| Warranty | SB-1050 |

Silencer



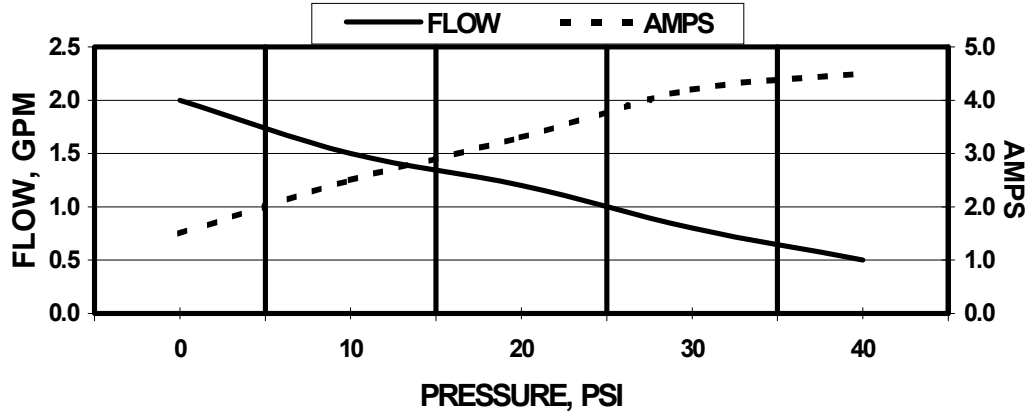
Parts Kits



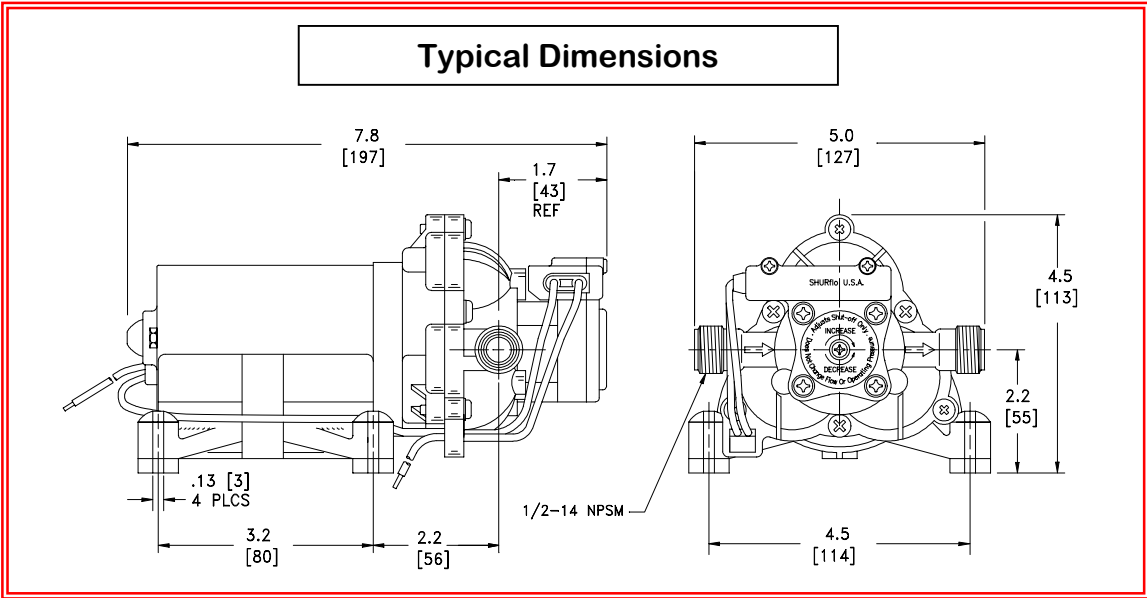
| Number | Component | Parts Kit |
|-----------|----------------|-----------|
| 1 | Housing/Switch | 94-231-10 |
| 2 | Valve Assembly | 94-232-06 |
| 3 | Drive Assembly | 94-238-03 |
| 4 | Motor | 11-192-06 |
| 5 | Pump Head | 94-236-45 |
| Not Shown | Check Valve | 94-237-00 |

Typical Performance @ 12 VDC

| PRESSURE | | FLOW | | CURRENT |
|----------|-----|------|-----|---------|
| BAR | PSI | GPM | LPM | AMPS |
| 0.0 | 0 | 2.0 | 7.5 | 1.5 |
| 0.7 | 10 | 1.5 | 5.6 | 2.5 |
| 1.4 | 20 | 1.2 | 4.5 | 3.3 |
| 2.1 | 30 | 0.8 | 3.0 | 4.2 |
| 2.8 | 40 | 0.5 | 1.9 | 4.5 |



Typical Dimensions



* ISO Registered Facility



First in Fluid Innovation

SHURflo reserves the right to update specifications, prices, or make substitutions.

SHURflo ★
12650 Westminster Ave.
Santa Ana, CA 92706-2100
(800) 854-3218 (714) 554-7709
FAX (714) 554-4721
Shipping/UPS: 12650 Westminster Ave.
Garden Grove, CA 92843

SHURflo East
52748 Park Six Court
Elkhart, IN 46514-5427
(800) 762-8094
(219) 262-0478
FAX (219) 264-2169
© 2001

SHURflo Ltd.
Unit 5 Sterling Park
Gatwick Road, Crawley
West Sussex, RH10 2QT
United Kingdom
+44 1293 424000
FAX +44 1293 421880